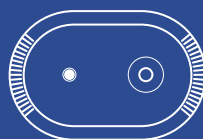


LIGHT UP DETECTORS



PROCEDURES MANUAL

FEBRUARY
2024

Table of contents

	INSTALLATION PRINCIPLES	3
	LIGHT UP OCCUPANCY DETECTORS CHART	4
	CLOSE UP APPLICATION	5
	INSTALLATION PREREQUISITES	6
	1. Sign in to the Legrand Close Up application via your Legrand account	6
	2. Legrand Close Up application: opening the projects screen	7
	INSTALLATION PROCEDURE	8
	1. Searching for a detector using the Close Up application	8
	2. Viewing and/or modifying the detector's settings	9
	PROCEDURE FOR ADDING A BATTERYLESS WIRELESS CONTROL	10
	Connecting a batteryless wireless control to a detector	10
	PROCEDURE FOR ADDING A CONNECTED OUTLET	11
	Associating a connected outlet to a detector	11
	PROCEDURE FOR REPLACING A BATTERYLESS WIRELESS CONTROL UNIT	13
	Dissociating a batteryless wireless control from a detector	13
	PROCEDURE FOR REPLACING A CONNECTED OUTLET	14
	Dissociating a connected outlet from a detector	14
	PROCEDURE FOR REPLACING A DETECTOR	15
	1. Disassociate wireless peripherals from a functional detector	15
	2. Installing a new detector and its wireless peripherals	15
	PROCEDURE FOR UPDATING A DETECTOR	16
	Updating a detector	16
	PROCEDURE FOR INSTALLING A 3-ZONE DALI	17
	1. Creating an installation	17
	2. Verifying an installation	18
	3. Modifying an installation	18
	4. Removing an installation	19
	SHARING OR TRANSFERRING PROJECT MANAGEMENT	20
	1. Share project management	20
	2. Transfer project management	20

PROCEDURES

INSTALLATION PRINCIPLES



The Light Up occupancy detectors can be used to control the lighting in a room while maintaining predetermined levels of brightness.

They can operate alone and/or in addition to :



- a wired control for manual override



- a wireless, batteryless control (*) for manual override



- a connected outlet to power plugged devices only when someone is present

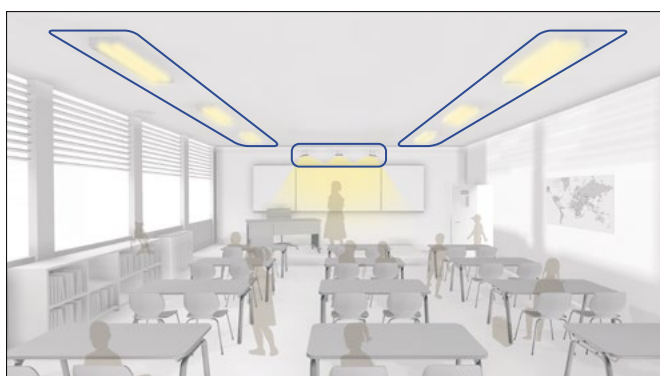
* See the "wireless, batteryless control" offer available in your area.

LIGHT UP OCCUPANCY DETECTORS CHART

DESIGNATIONS	REFERENCES					
 Detector ON/OFF DALI detector - 1 zone DALI detector - 3 zones	0 485 51	•	•			
	0 485 52	•		•		
	0 485 55	•		•		
 Corridor ON/OFF detector Corridor DALI detector - 1 zone Corridor DALI detector - 3 zones	0 485 53	•	•			
	0 485 54	•		•		
	0 485 56	•		•		
 Multisensor DALI detector - 1 zone Multisensor DALI detector - 3 zones	0 485 71	•	•	•		•
	0 485 73	•	•	•		•
 Advanced multisensor DALI detector - 1 zone Advanced multisensor DALI detector - 3 zones	0 485 72	•	•	•	•	•
	0 485 74	•	•	•	•	•

The Light Up DALI - 3 zone detectors enable the control of 3 lighting zones:

- dimming on the window side
- dimming on the corridor side
- ON/OFF on the board side



CAPTIONS



CLOSE UP APPLICATION

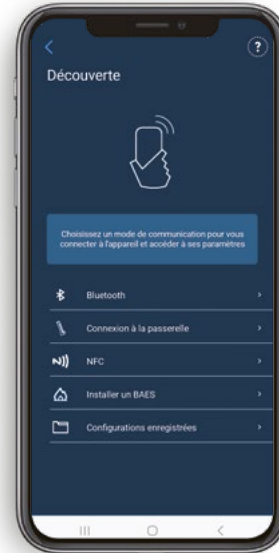
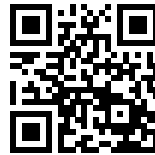


Legrand
Close Up

DOWNLOAD FOR FREE ON

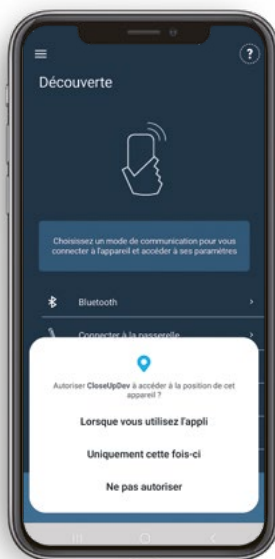


App Store is a service mark of Apple Inc. registered in the United States and other countries. Google, Google Play, Android, are registered trademarks of Google LLC.



On opening the Legrand Close Up application for the first time, you must accept the following terms and conditions to ensure optimal use :

- geolocation : necessary for Bluetooth use
- access to photos, videos, music/audio files : to save settings within a file
- take photos and record videos: for scanning QR codes



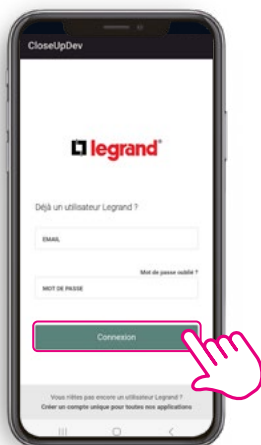
INSTALLATION PREREQUISITES

1. SIGN IN TO THE LEGRAND CLOSE UP APPLICATION VIA YOUR LEGRAND ACCOUNT



Internet connection is required as all your sites will be linked to your Legrand account.

- Open the Legrand Close Up application :
- If you already have a **Legrand account**, log in and go directly to the following page.
- Otherwise, click on **Create a single account for all our applications**.



Or



- To create your Legrand account, enter your **e-mail address** and the **verification code** you received before entering the required information.



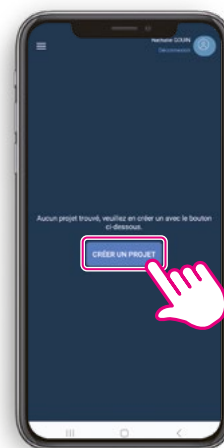
INSTALLATION PREREQUISITES (CONTINUED)

2. LEGRAND CLOSE UP APPLICATION: OPENING THE PROJECTS SCREEN

The project exists :
Click on it to select it.



The project does not exist :
Click on **Create project** and fill in the requested details.



NOTE
A project corresponds to a site (with one or more buildings, floors and zones)

Internet access is required to create a project.
Projects can only be accessed without an internet connection if you have accessed them (with internet) in the previous 24 hours.

INSTALLATION PROCEDURE

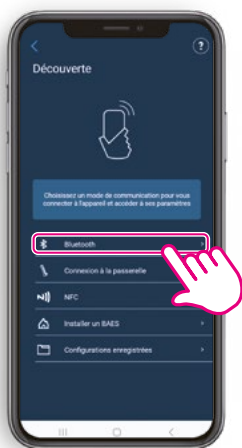
1. SEARCHING FOR A DETECTOR USING THE CLOSE UP APPLICATION



To access the detector settings, log on to the Close Up application.

- Before you get to this stage, please review the [Installation Prerequisites](#).

- Select **Bluetooth** to display the detectors list.



- A list of the nearby connected detectors appears.
- Click on the name of the detector you wish to access.



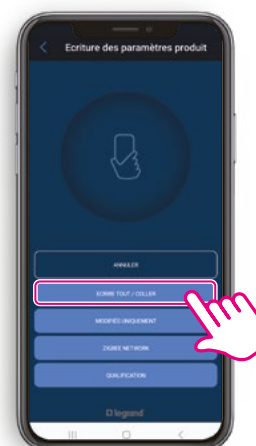
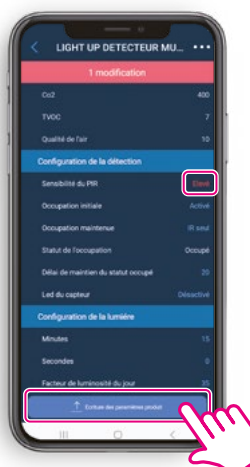
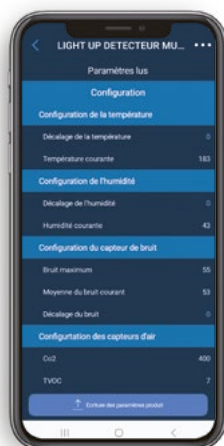
TIP

The Bluetooth LED lights up blue throughout the Bluetooth connection.

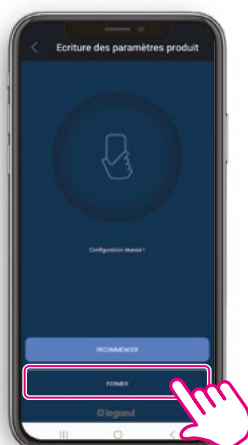
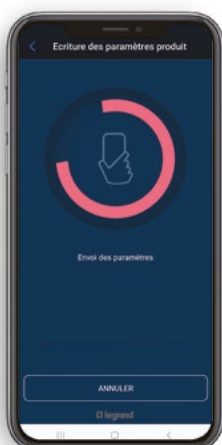
INSTALLATION PROCEDURE (CONTINUED)

2. VIEWING AND/OR MODIFYING THE DETECTOR'S SETTINGS

- You will then be taken to the **Tools** and **See details** screen.
- Click on **See details** to view and/or modify the detector's settings.
- A list of information will be displayed.
- It can be viewed and/or modified.
- When you modify a setting, it will be shown in **red**.
- Click on **Upload configuration** to send new information to the detector.



- You can transfer **all the information** or just the **modified information**.
- Then, click on **Close**.
- Once the transfer has been completed, all the settings revert to blue.



TIP

If the transfer was not successful, click on **Transfer** again.

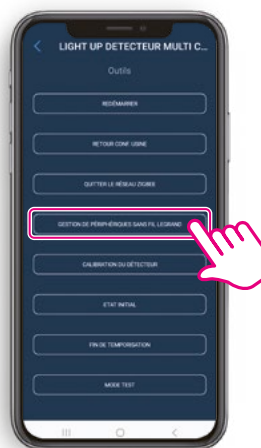
PROCEDURE FOR ADDING A BATTERYLESS WIRELESS CONTROL

CONNECTING A BATTERYLESS WIRELESS CONTROL TO A DETECTOR



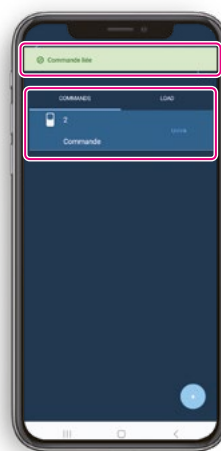
- Return to the **Tools** and **See details** screen.
- Click on **Tools** to associate a control to the detector.

- Click on **Manage Legrand wireless devices**.



- Go to the **Commands** tab.
- Click on **+** then scan the QR code of the control you want to associate.

- The radio LED on the **detector** turns to a **steady magenta**, indicating that the network has been opened.
- After scanning the QR on the control, the message **Wireless batteryless control linked** appears. The procedure is complete for the control. The radio LED goes out.
- The control appears on the list.



TIP

To ensure that the connection between the control and the detector is working properly, press its button to check that it is indeed controlling the light.

TIP

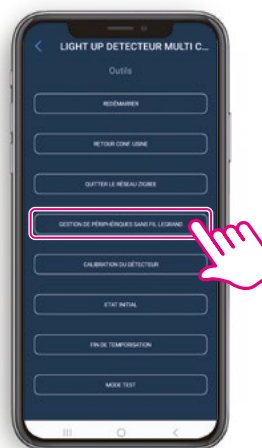
The QR code is on the front of the product. Remember to zoom in before scanning.

PROCEDURE FOR ADDING A CONNECTED OUTLET

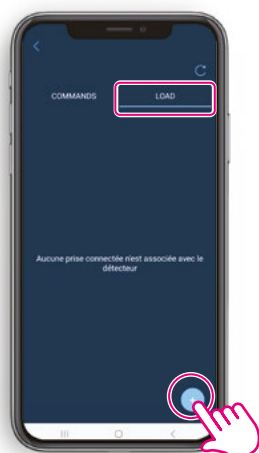
ASSOCIATING A CONNECTED OUTLET TO A DETECTOR



- Return to the **Tools** and **See details** screen.
- Click on **Tools** to associate an outlet to the detector.
- Click on **Manage Legrand wireless devices**.



- Go to the **Load** tab.
- Click on **+** then scan the QR code of the connected outlet you want to associate.



TIP

The QR code to scan is printed on the product. Remember to zoom in before scanning.

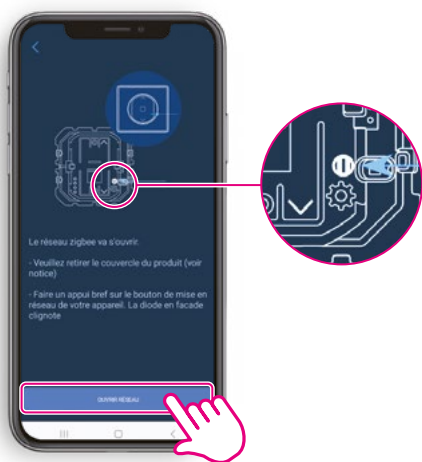
PROCEDURE FOR ADDING A CONNECTED OUTLET (CONTINUED)

ASSOCIATING A CONNECTED OUTLET TO A DETECTOR (CONTINUED)



- Click **Open Network** on the application.

- The radio LED on the **detector** turns to a **steady magenta**, indicating that the network has been opened.
- Then **press down on the outlet button**, as requested by the application.

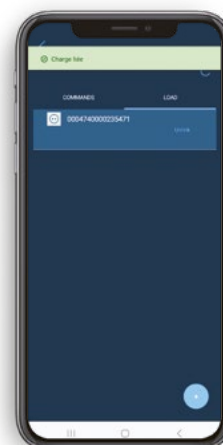


TIP

Once you have pressed down on the application, you must press down the outlet button within **3 minutes**.

- The **outlet's** radio LED flashes **green** and then turns a **steady magenta** when it has joined the detector's network.

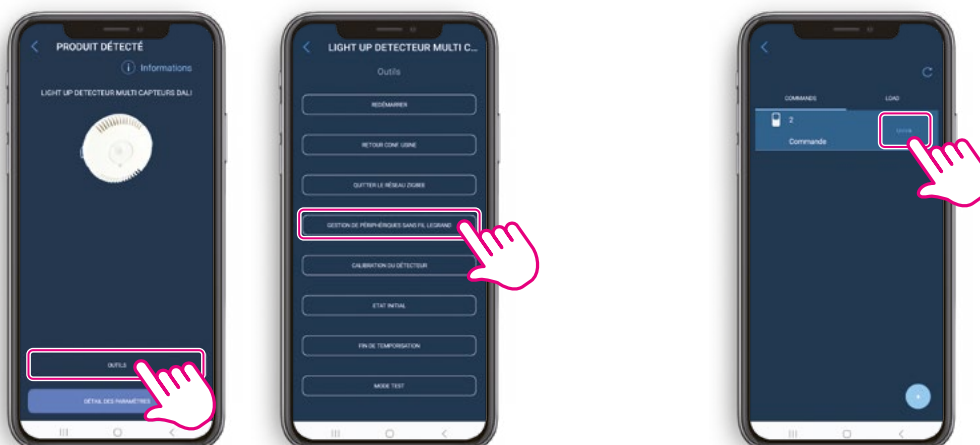
- The outlet's LED will turn a **steady magenta** and the message **Connected outlet linked** will appear. The procedure is complete for the outlet.
- The outlet appears on the list.



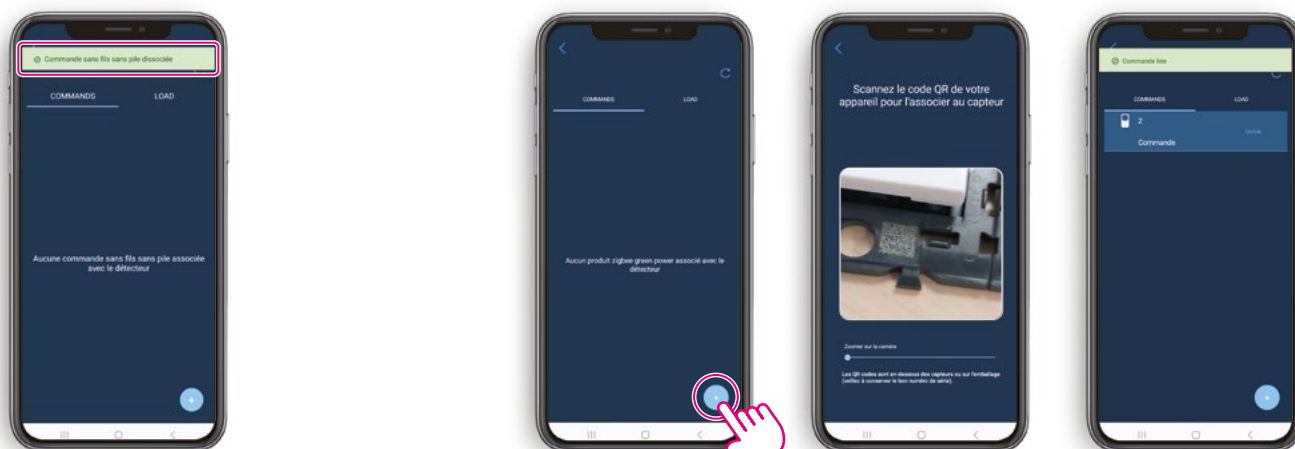
PROCEDURE FOR REPLACING A BATTERYLESS WIRELESS CONTROL UNIT

DISSOCIATING A BATTERYLESS WIRELESS CONTROL FROM A DETECTOR

- On the **Tools** and **See details** screen.
- Click on **Tools** then **Manage Legrand wireless devices**.
- Click **Unlink**.



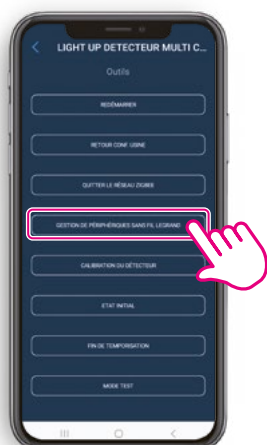
- The message **Wireless batteryless control unlinked** will appear.
- Click on **+** then scan the QR code of the new control you want to associate.
- The procedure for the control is complete.



PROCEDURE FOR REPLACING A CONNECTED OUTLET

DISSOCIATING A CONNECTED OUTLET FROM A DETECTOR

- On the **Tools** and **See details** screen.
- Click on **Tools** then **Manage Legrand wireless devices** then go to the **Load** tab.
- Click **Unlink**.



- The message **Connected outlet unlinked** will appear.
- Redo the **Procedure for adding a connected outlet > Associating a connected outlet to a detector.**



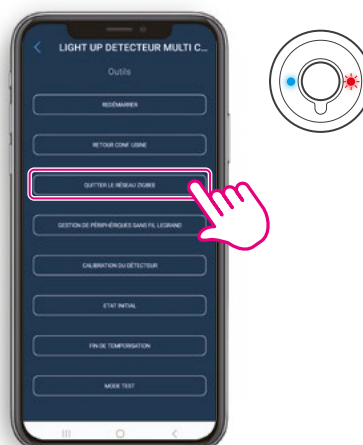
PROCEDURE FOR REPLACING A DETECTOR

1. DISASSOCIATE WIRELESS PERIPHERALS FROM A FUNCTIONAL DETECTOR

- On the **Tools** and **See details** screen.
- Click on **Tools**.



- Click on **Leave radio network**.
- The detector's LED **blinks red**.



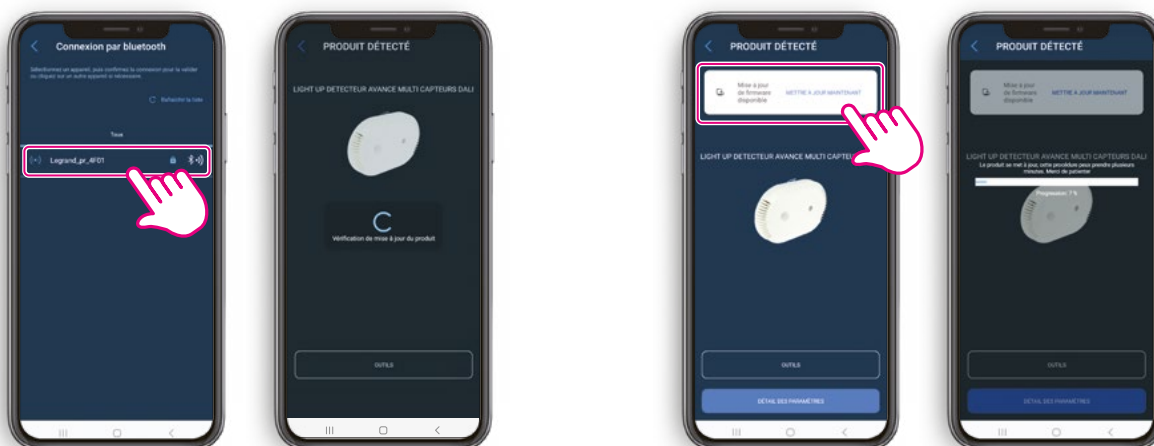
2. INSTALLING A NEW DETECTOR AND ITS WIRELESS PERIPHERALS

- To add the new detector and its peripherals, follow the steps given in the **Installation procedure > 1. Searching for a detector using the Close Up application**.

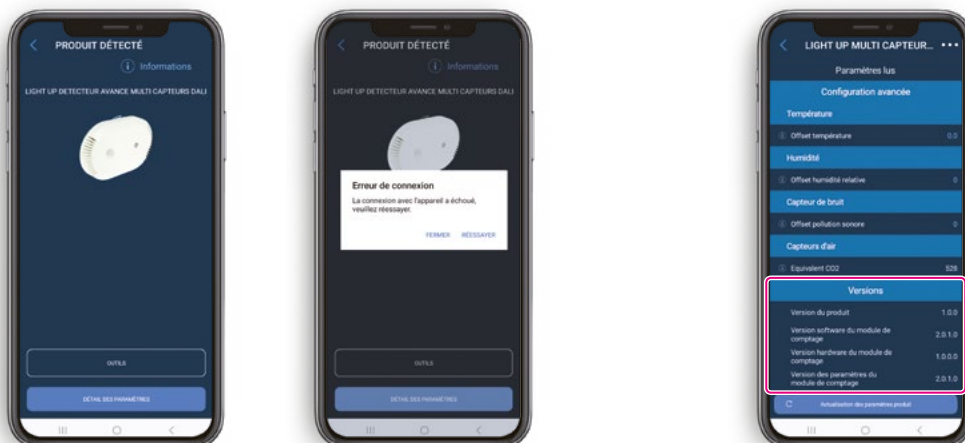
PROCEDURE FOR UPDATING A DETECTOR

UPDATING A DETECTOR

- Connect to the detector using Bluetooth.
- Click **Update Now** to launch the update.



- The update file has been sent to the detector.
- The detector will blink cyan during the update. This step requires the detector to be restarted.

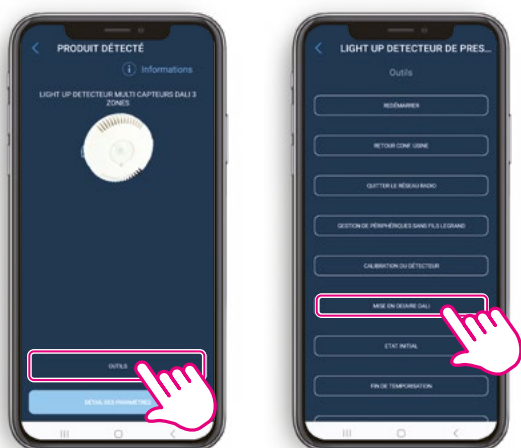


TIP
To check the version of the product in the settings list, activate the "Advanced view".

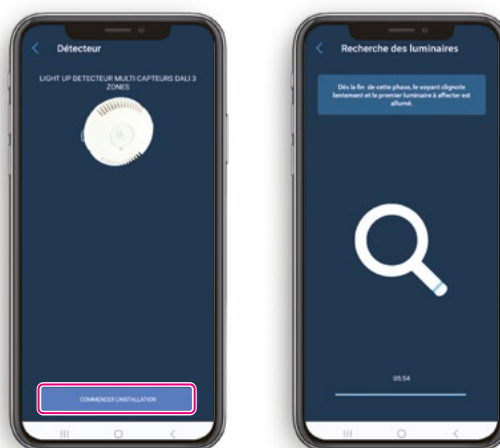
PROCEDURE FOR INSTALLING A 3-ZONE DALI

1. CREATING AN INSTALLATION

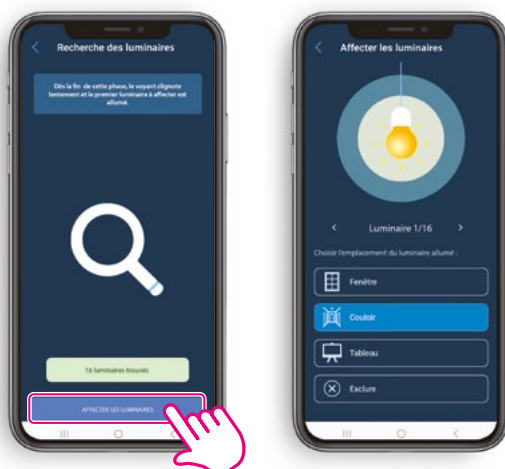
- Connect to the detector using Bluetooth.
- Click on **Tools**.
- Select **DALI management**.



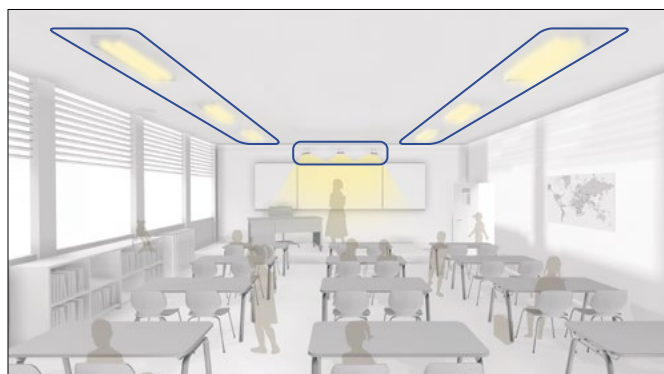
- If there is no existing installation, click **Begin installation**.
- The luminaire search is launched.



- The search and addressing phase is now complete. The number of luminaires found is indicated.
- Click on **Assign luminaires**.



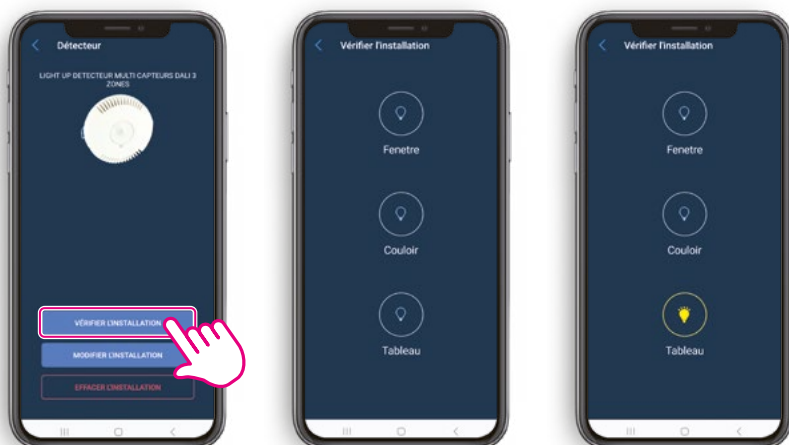
- For each luminaire, choose a group to assign it to:
 - window
 - corridor
 - board
 - the luminaire can also be excluded
- Each luminaire will light up individually, to facilitate its location in the room.



PROCEDURE FOR INSTALLING A 3-ZONE DALI (CONTINUED)

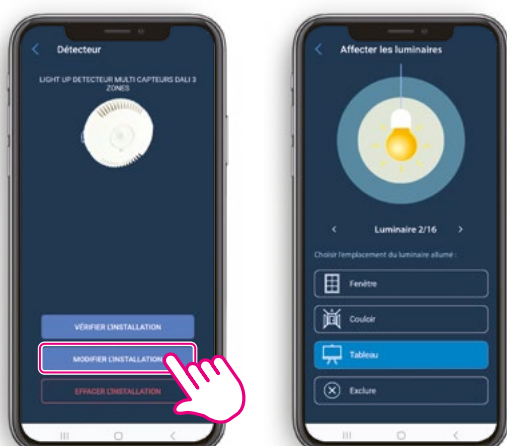
2. VERIFYING AN INSTALLATION

- Once all the luminaires have been assigned, you can check each group of luminaires.



3. MODIFYING AN INSTALLATION

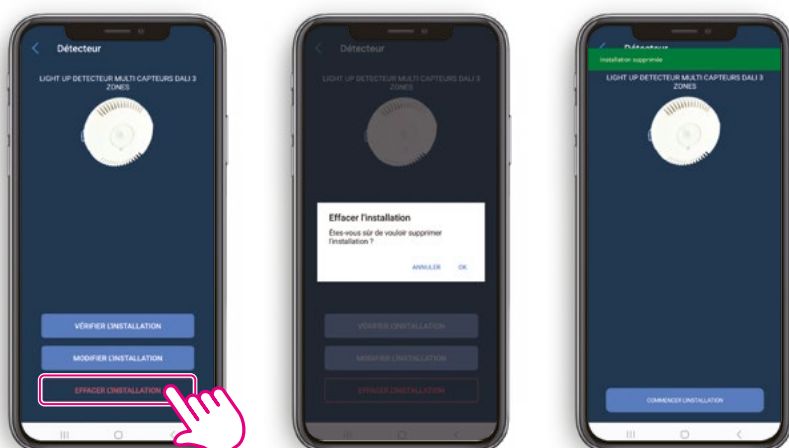
- If you need to modify the installation, click on **Modify installation**.



PROCEDURE FOR INSTALLING A 3-ZONE DALI (CONTINUED)

4. REMOVING AN INSTALLATION

- Click on **Delete DALI Installation**.
- Confirm the deletion by clicking on **OK**.
- The installation is then deleted.

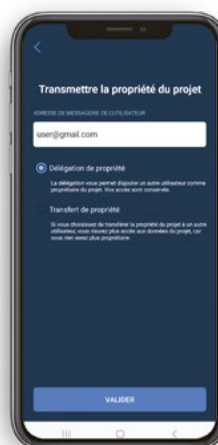
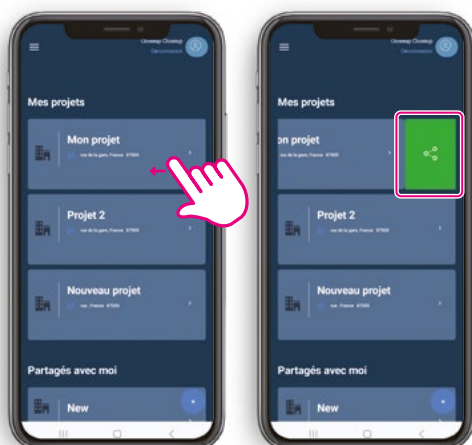


SHARING OR TRANSFERRING PROJECT MANAGEMENT

1. SHARE PROJECT MANAGEMENT

- Open the projects list.
- Swipe from **right to left**.
- Click the **share** button.

- Select **Delegation of ownership**.
- Enter the **e-mail** address of the person you want to share ownership of the project with.
- Click on **Validate**.

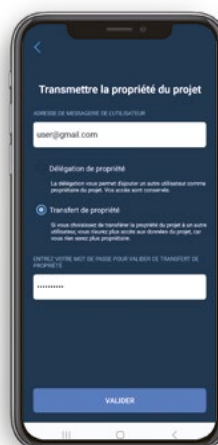
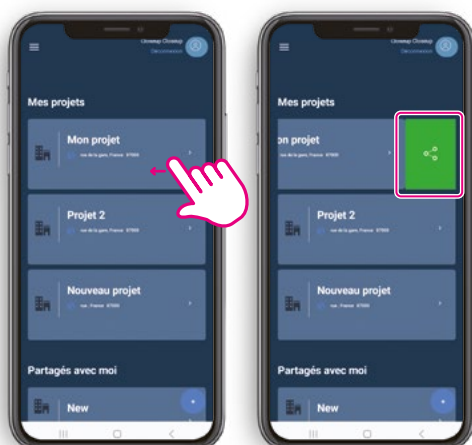


Ownership of the project is shared, preserving all your access settings.

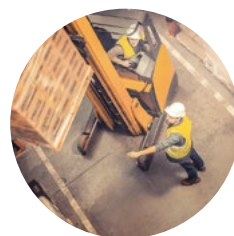
2. TRANSFER PROJECT MANAGEMENT

- Open the projects list.
- Swipe from **right to left**.
- Click the **share** button.

- Select **Transferring ownership of the project**.
- Enter the **e-mail** address of the person you want to transfer ownership of the project to.
- Enter your **Legrand account password**.



Ownership of the project is transferred completely. You will no longer have access to it.



facebook/legrand



linkedin/legrand



twitter/legrand



pinterest/legrand



legrand.fr

Service Relations Pro

0810 48 48 48 Service gratuit
+ prix appel

du lundi au vendredi 8h à 18h
128 av. de Lattre de Tassigny
87045 Limoges Cedex - France
E-mail : accessible sur legrand.fr

