

MyHOME

domotica



USE OF MYHOME DEVICES FOR THE MANAGEMENT OF THE NUVO MULTIROOM AUDIO SYSTEM

GUIDE
FOR DESIGN
AND CONFIGURATION



GENERAL FEATURES

System features	4
The advantages of integration with MyHOME	5

CONFIGURATION

Driver manager: Player configuration	6
Additional information	16

GENERAL FEATURES

NUVO HIGH QUALITY DIGITAL MUSIC

Wireless installation

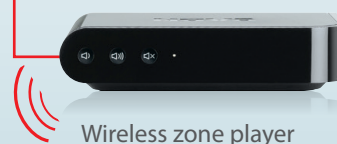
Wireless dual band solution (2.4 and 5 GHz) ideal for making systems which are easily expandable and independent of the building structure.



Garden
loudspeakers



Wireless zone player



Wireless zone player



Gateway



NUVO APP

System features

NUVO is an intelligent system, made up of audio HI-FI interconnected components, connected via Wi-Fi or with wires to the home LAN network. It is specially designed to faithfully play digital music in several rooms.

The use of a specific free APP for Smartphone and Tablet allows system configuration and management as well as access to music playlists in local network and the best online music streaming services.

For more information consult the NUVO area of the www.bticino.com

8" plasterboard loudspeakers



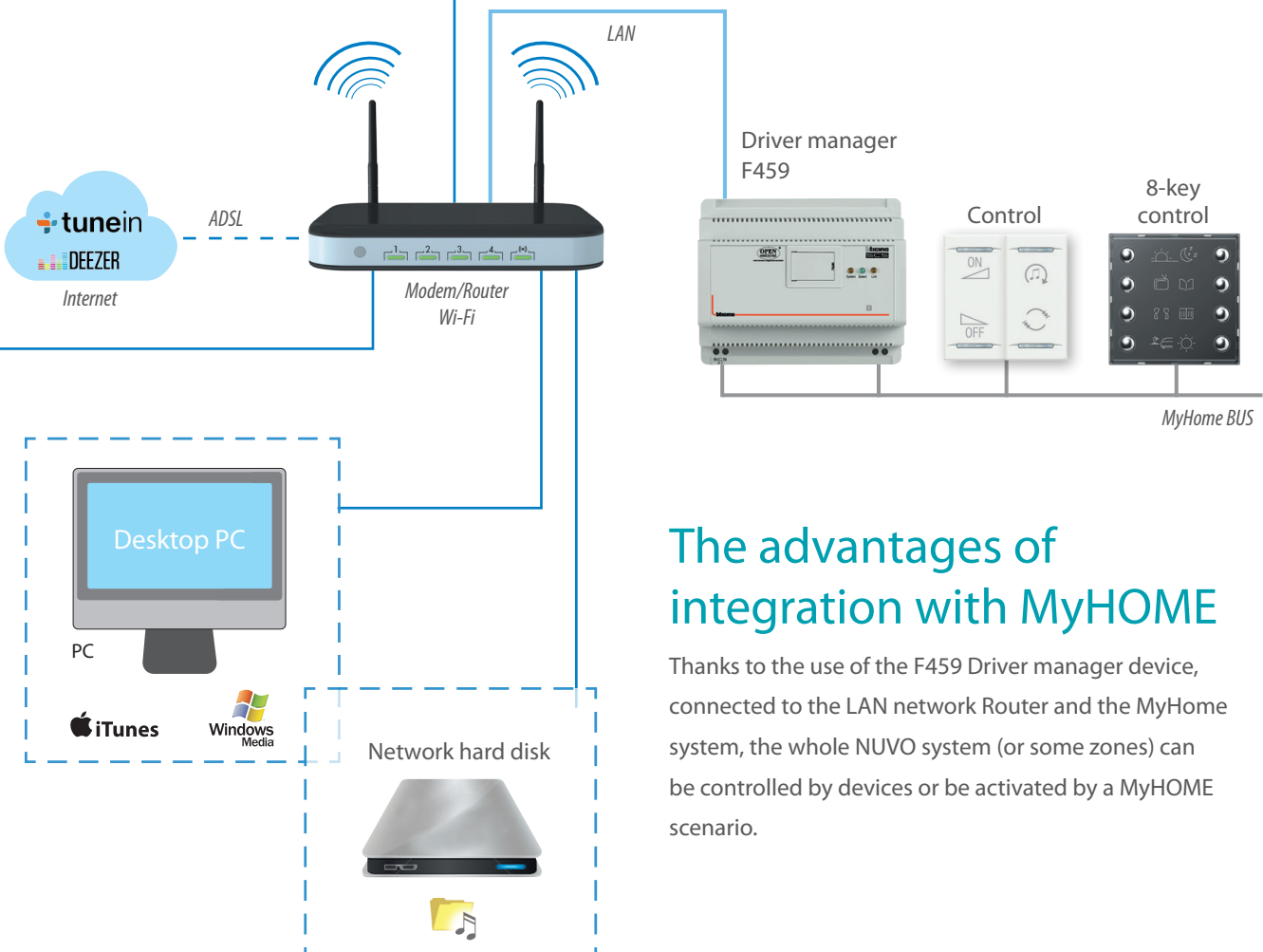
6.5" ceiling loudspeakers



Multi-zone player

Wired installation

Wired solution for sound system in rooms fitted with wired LAN network. The 3-zone players can be centralised in rack. The system can be expanded via wireless.

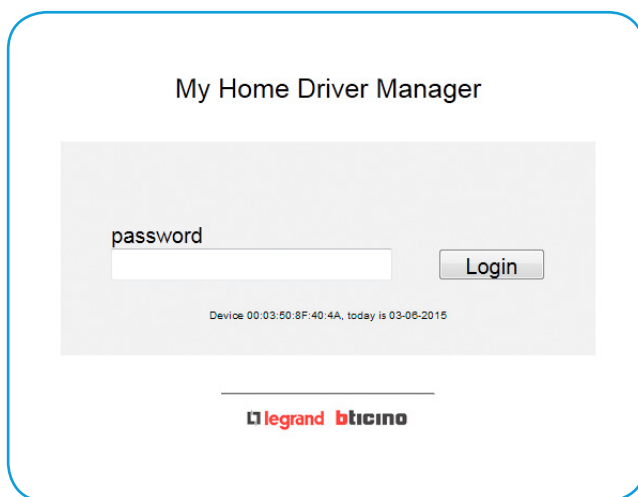


The advantages of integration with MyHOME

Thanks to the use of the F459 Driver manager device, connected to the LAN network Router and the MyHome system, the whole NUVO system (or some zones) can be controlled by devices or be activated by a MyHOME scenario.

Driver manager: Player configuration

1. Connect the Personal Computer to the LAN network where the NUVO system and the F459 Driver manager device are connected. The NUVO system must already be configured and working.
2. Open a browser and access the 192.168.1.35 address.
3. Enter the text “admin” in the Password field. You will then access the “Web Configurator” program Home page.

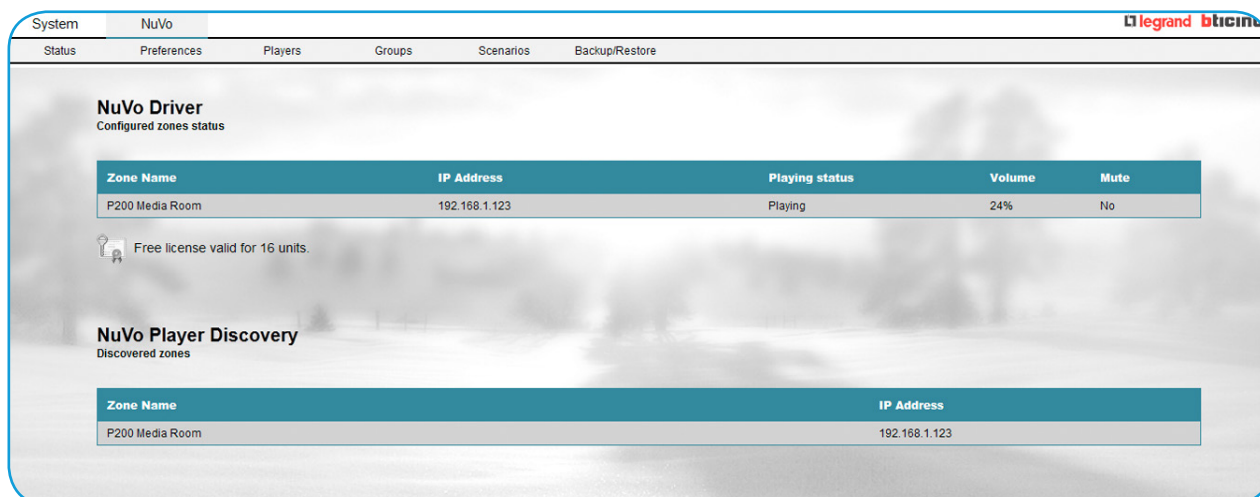


4. From the Home page select Nuvo in the menu at the top. This gives access to the main Nuvo system management web page divided into two areas of information:

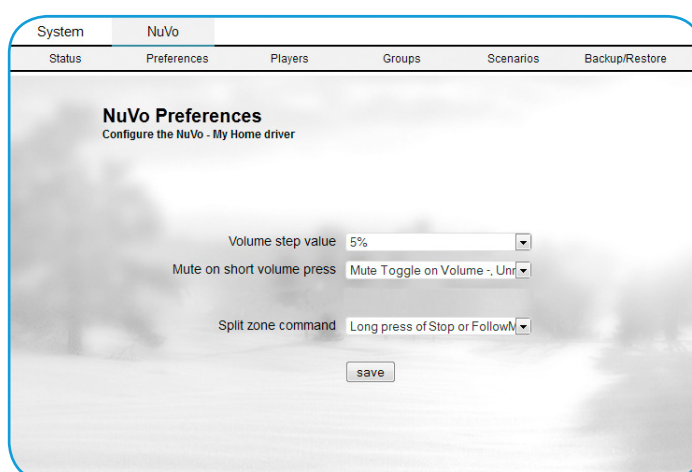
- NuVo Player Discovery area: displays the NuVo devices in the system.
- NuVo Driver area: in the first-configuration phase there is no information.

After configuring the Players, the respective zones managed will be listed in this area.

It is possible to configure up to a maximum of 16 zones.



5. From the menu select the “**Preferences**” tab. You will access the web page to configure some general parameters to control the NUVO system. The options which can be selected are described below.



■ **Volume step value:**

Shows the volume step percentage obtained by means of the up/down pushbutton. The possible choices are:

- 3%
- 5%
- 10%

■ **Mute on short Volume press:**

Manages the mute function, as follows:

- Cyclical management of the mute function with a short press on the “-” volume pushbutton .
Remove Mute option with a short press on the “+” volume pushbutton.
- Set Mute with a short press on the “-” volume pushbutton and Remove Mute with a short press on the “+” volume pushbutton.
- The **Mute** function is not managed.

■ **Split zone command**

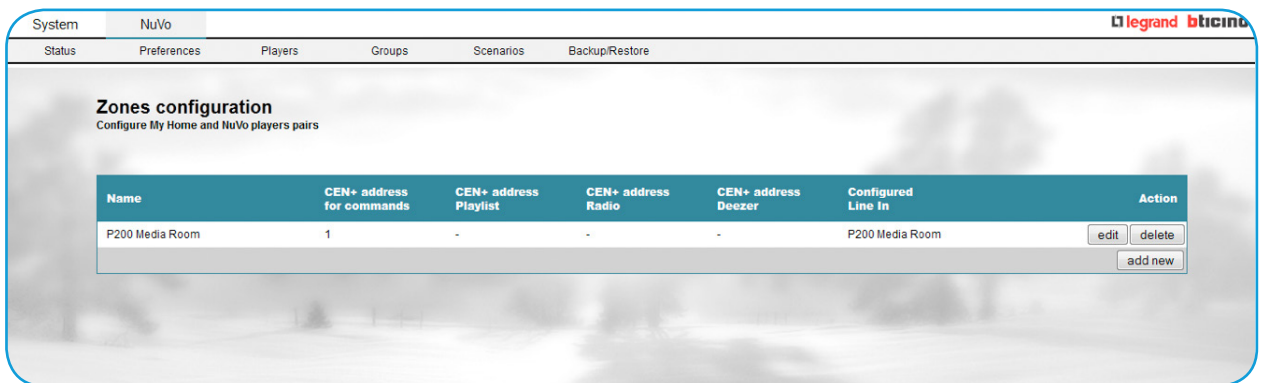
Lets you manage the Nuvo split zone function, with a long press on the Stop or Follow me pushbutton, as follows:

- Extended pressure of the Stop or Follow Me key
- Extended pressure of the Follow Me key
- Extended pressure of the Stop key
- No

ADD A NUVO ZONE TO BE CONTROLLED

Select the “**Players**” tab in the menu. From this new page you can add a new zone to be managed by means of MyHOME commands, modify its parameters or cancel it.

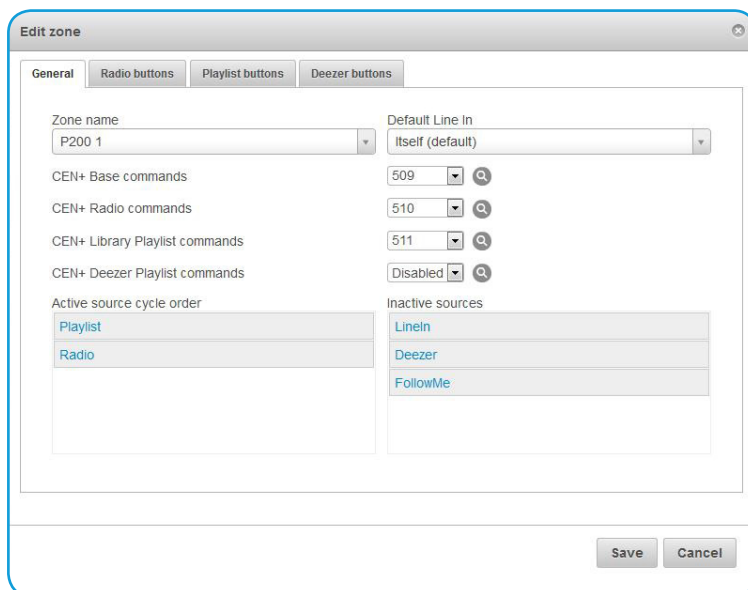
To proceed click on the “**Add**” key, then enter general information on the zone, such as name, CEN+ command address and order of the source cycle, etc..



On selecting the “**edit**” pushbutton at the right the “**Edit zone**” area is displayed. This contains the items and menus for configuration of the parameters for the players in the specific zone.

Configuration of the “Edit zone” page

On selecting the “**General**” tab the following screen will be displayed.



In “**zone name**” select the zone to control. In the CEN+ Base command, CEN+ Radio commands etc. drop-down menus enter the CEN+ address of the MyHOME device to be used to manage the Nuvo zone, as indicated in the following pages.

CEN+ base commands

This mode allows you to associate one of the audio functions listed in the following table to each control device pushbutton. In the drop-down menu at the left enter the CEN+ number assigned to the MyHOME control device to be used to manage the NUVO audio functions.

Functions of the CEN+ control

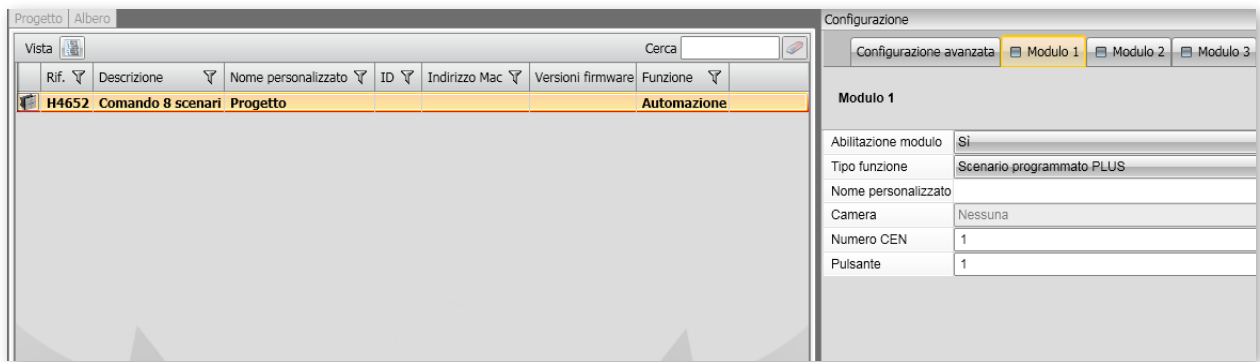
The CEN+ control sets the following actions:

MAIN CONTROL TO CONTROL TRACE AND VOLUME		
PUSHBUTTON	DESCRIPTION	NOTES
1	Play	Simple playing, if the player queue is empty, the first Source Cycle option starts.
2	Stop	Stop (or pause) (zone disconnection, keeping pressed for a long time)
3	Volume Up	(Volume Up) Removes the "Mute" option on pressing once, if enabled during the global configuration,
4	Volume Down	(Volume Down) Mutes or enables the "Mute" option" on pressing once, if enabled during the global configuration
5	Next item on queue	Next item on queue
6	Previous item on queue	Previous item on queue
7	Mute toggle	Cyclic mute key
8	Mute	Mute
9	Unmute	Unmute
10	Volume 0%	
11	Volume 10%	
12	Volume 20%	
13	Volume 30%	
14	Volume 40%	
15	Volume 50%	
16	Volume 60%	
17	Volume 70%	
18	Volume 80%	
19	Volume 90%	
20	Volume 100%	
21	Play	Advanced playing, if the player queue is empty, the first Source Cycle option starts, otherwise it performs the next command. Source Cycle keeping pressed.
23	ON + Volume UP	ON with a short press – Volume UP with a long press
24	OFF + Volume DOWN	OFF with a short press – Volume DOWN with a long press
27	Follow Me	Keep the source
28	Source Cycle	Source Cycle
29	Line In	Line input

CONFIGURATION

The CEN+ address is assigned to the MyHOME control device with the MyHOME_Suite configuration software; for each device pushbutton (indicated in Module in the software) set “ **PLUS scenario programmed**” in the “**Function type**” drop-down menu.

In “**CEN number**” set the CEN+ command number while the number of the function performed by the pushbutton (ref. table of previous page) must be entered in “**Pushbutton**”.

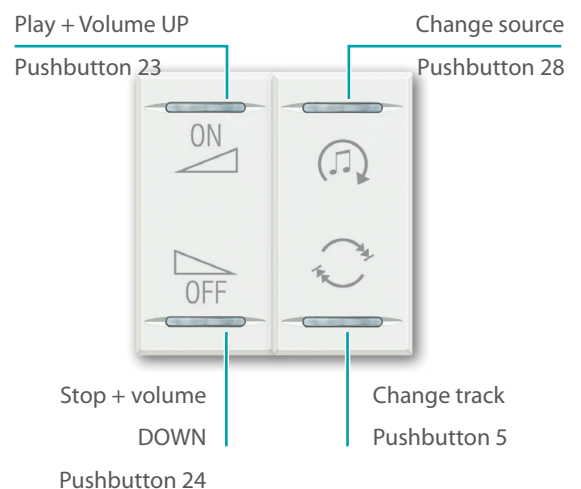


The configured CEN+ value must then be set in the “**Web configurator**” program drop-down menu.

Example of MyHOME devices configured for NUVO audio management

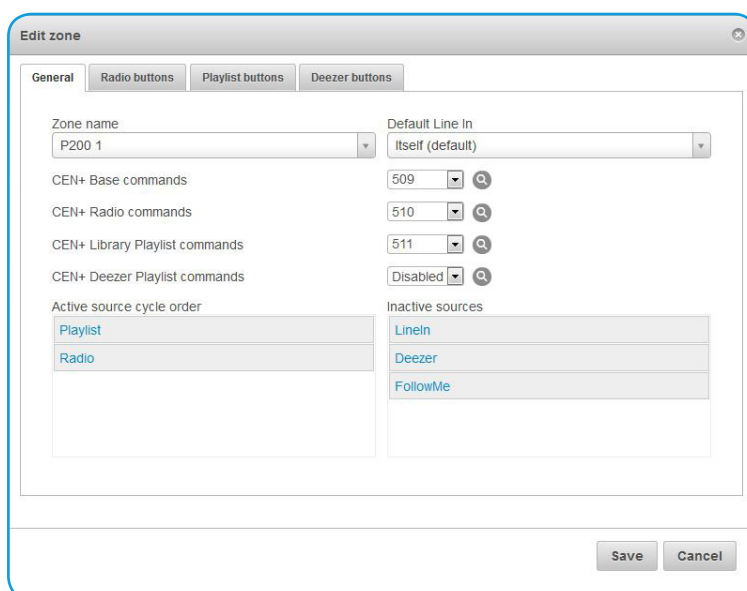
H/LN4652 8-key control configured to perform various audio functions (ref. table for detail of the controls).

H4652/2 control configured to emulate a standard MyHOME Sound system control.



Other CEN+ commands can be set in the “General” page of the “Web Configurator” program to manage the following functions:

- **CEN+ Radio commands**
The command pushbutton calls up to 10 radio stations configured in the “Radio buttons” tab.
- **Playlist CEN+ Library Playlist commands**
The command pushbutton calls up to 10 playlists configured in the “Playlist buttons” tab.
- **CEN+ Deezer Playlist commands**
The command pushbutton calls up to 10 Deezer playlists configured in the “Deezer buttons” tab.



To complete the configuration of the “General” page define the sources to be controlled with the MyHOME control. All the sources to be managed must be dragged, in the order required, from the “Inactive sources” area to the “Active source cycle order” area.



For example if you want the Playlist source to be the first source managed by the control and the Radio the second, drag it and move it from “Inactive sources” to “Active source cycle order” and then proceed in the same way with the Radio.

CONFIGURATION

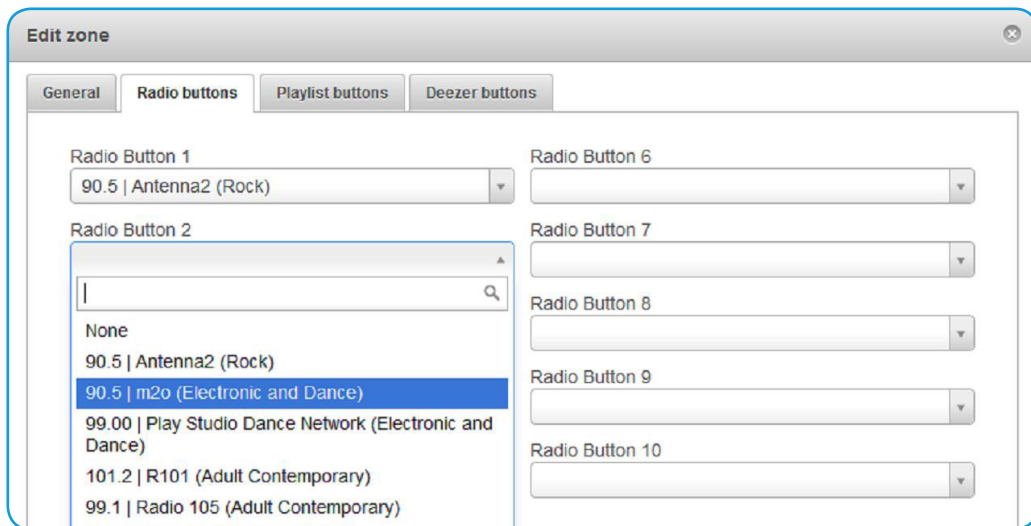
After establishing which sources to manage, they must be configured accessing the Radio buttons, Playlist buttons and Deezer buttons tabs.

Configuration of the “Radio buttons” page

Up to 10 Radio IP, which can be called by a MyHome command, can be set in this screen.

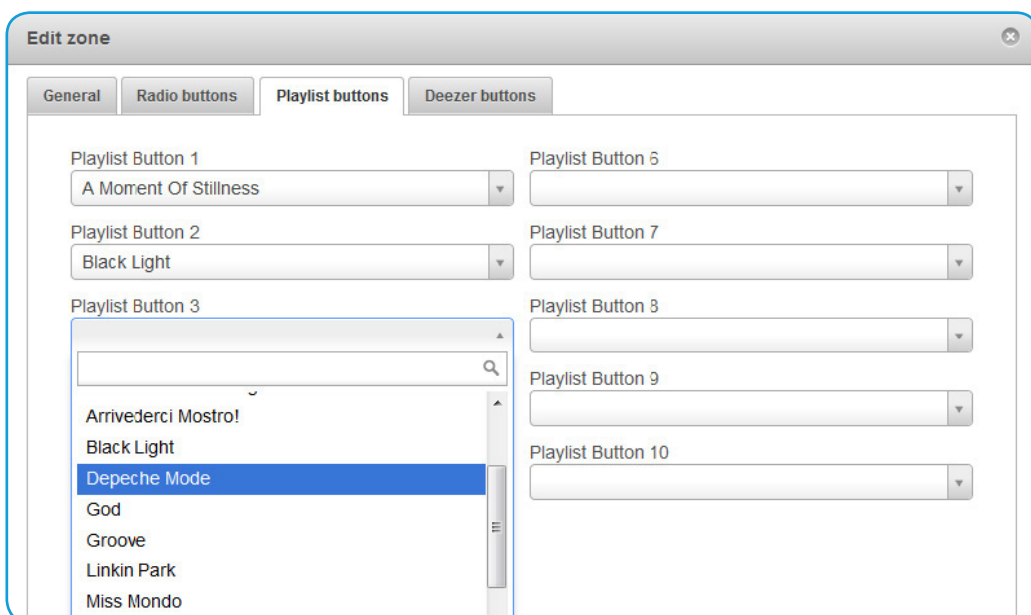
The radio list will only be available if the Internet connection is active and some local radios have been added with the NUVO APP in Tuneln -> “My Favorites”.

See the specific chapter below for the configuration operations.



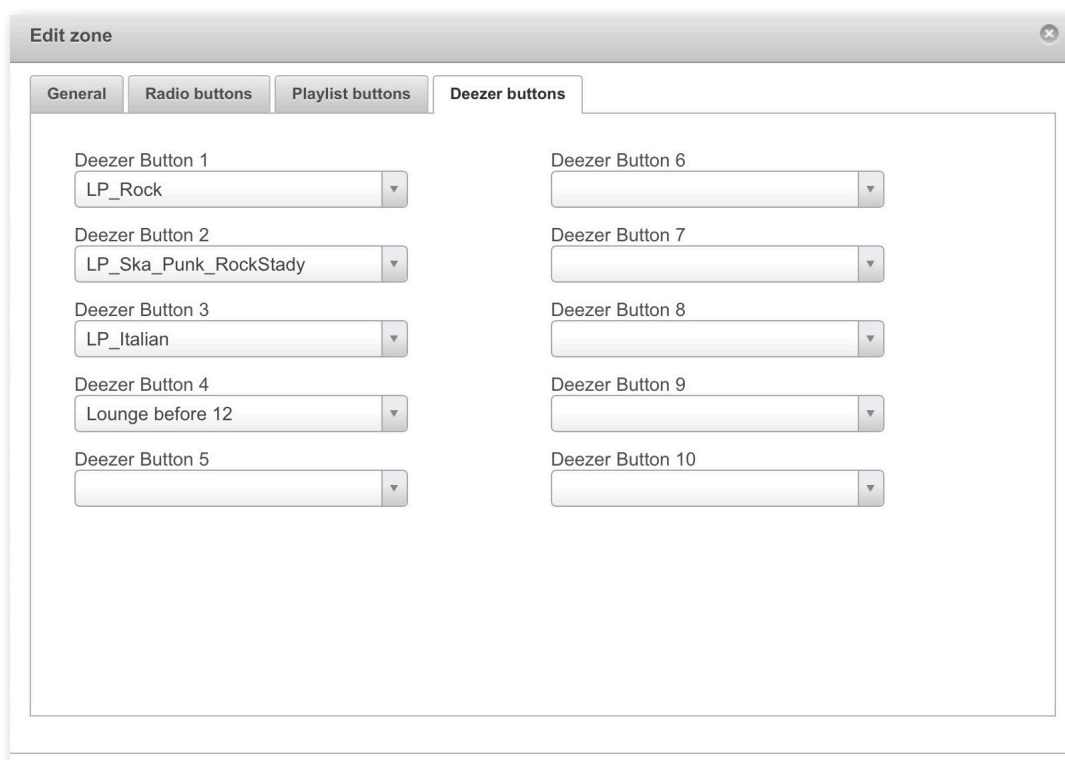
Configuration of the “Playlist buttons” page

Up to 10 Playlists of files available on Pen drive or Hard Disk connected to the NUVO system, which can be called by a MyHome command, can be set in this screen.



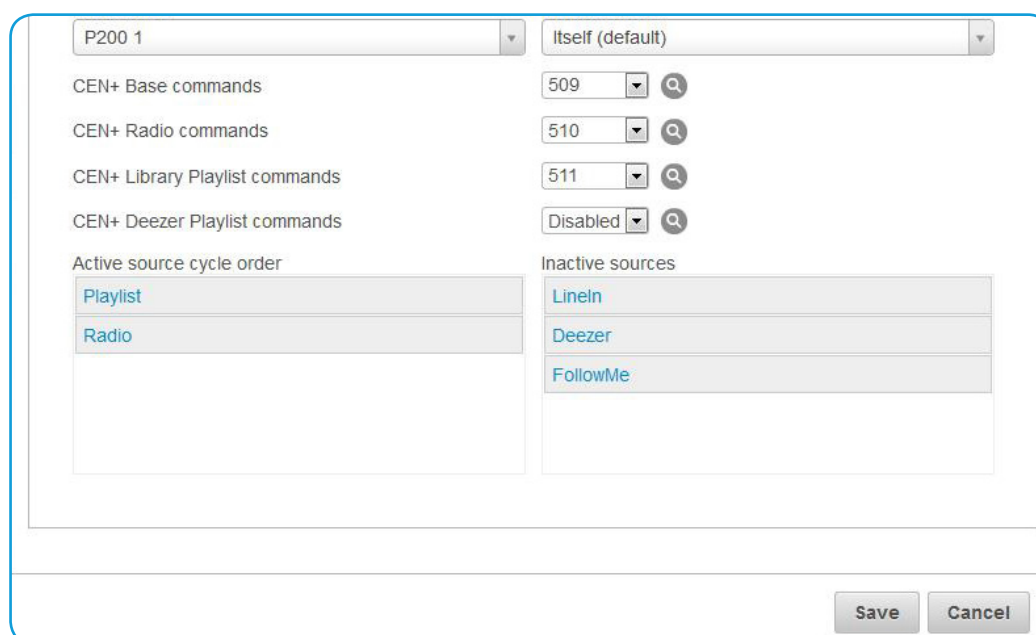
Configuration of the “Deezer buttons” page

Up to 10 Deezer Playlists, which can be called by a MyHome command, can be set in this screen.



Save the configuration of a NUVO zone to be controlled.

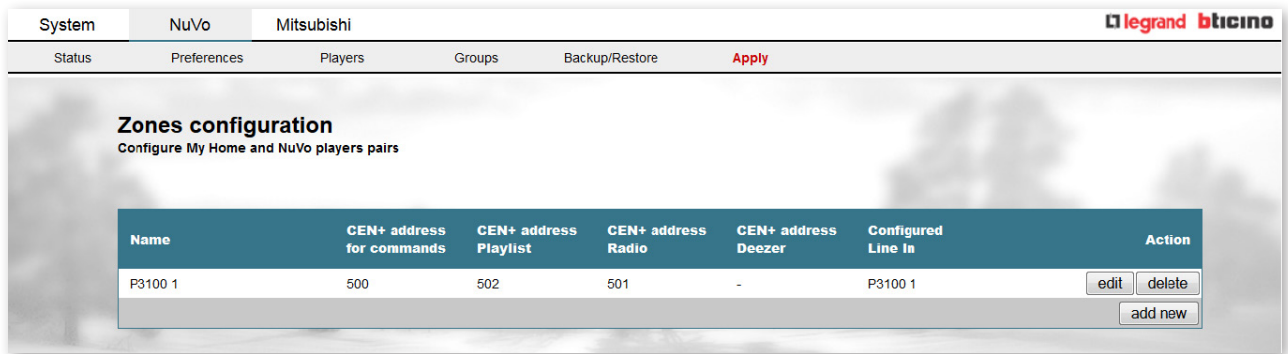
At the end of the configuration, save the data by pressing the “Save” key.



CONFIGURATION

The zone with the assigned configuration data can be seen in the zone configuration page.

To apply these modifications click on the **“Apply”** key in the menu at the top, second level, then on **“Save”** to confirm the modifications.



Management of a group

The NUVO driver defines an extra CEN+ Address used for players in a group. The keys from 1 to 10 identify the groups established by the user, which can be configured via the Web Configuration interface.

Key 30 defines all the zones (cancels all the groups) while key 31 unites all the zones together.

Scenario management

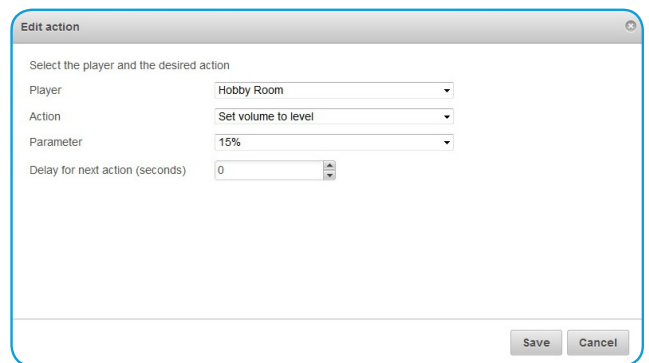
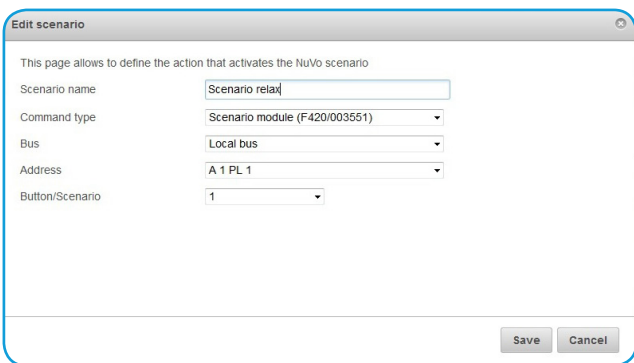
In this page one or more actions on NUVO can be associated to a MyHOME scenario.

Define the scenario command to associate

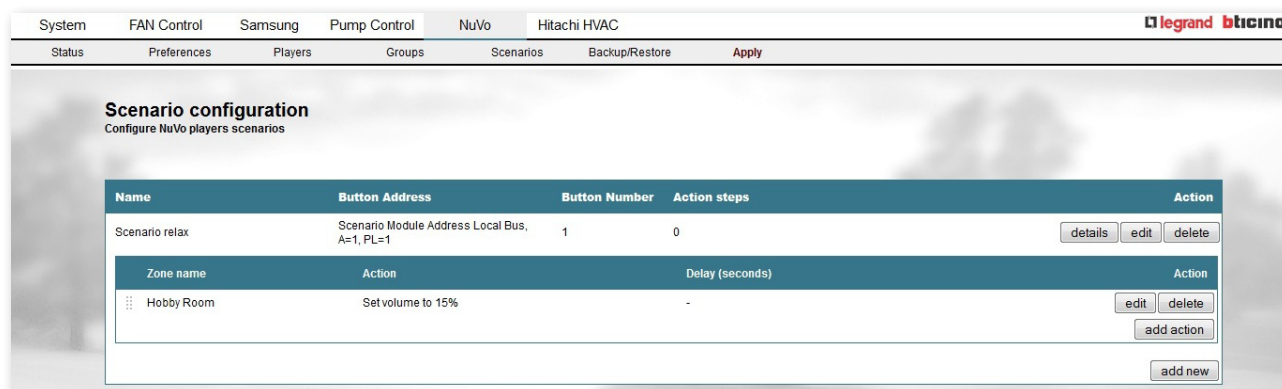
In **“add new”** define the scenario name and the activation command type and address.

Define the actions

In **“details – add action”** define the player which must perform the action, the type of action and any activation delay.



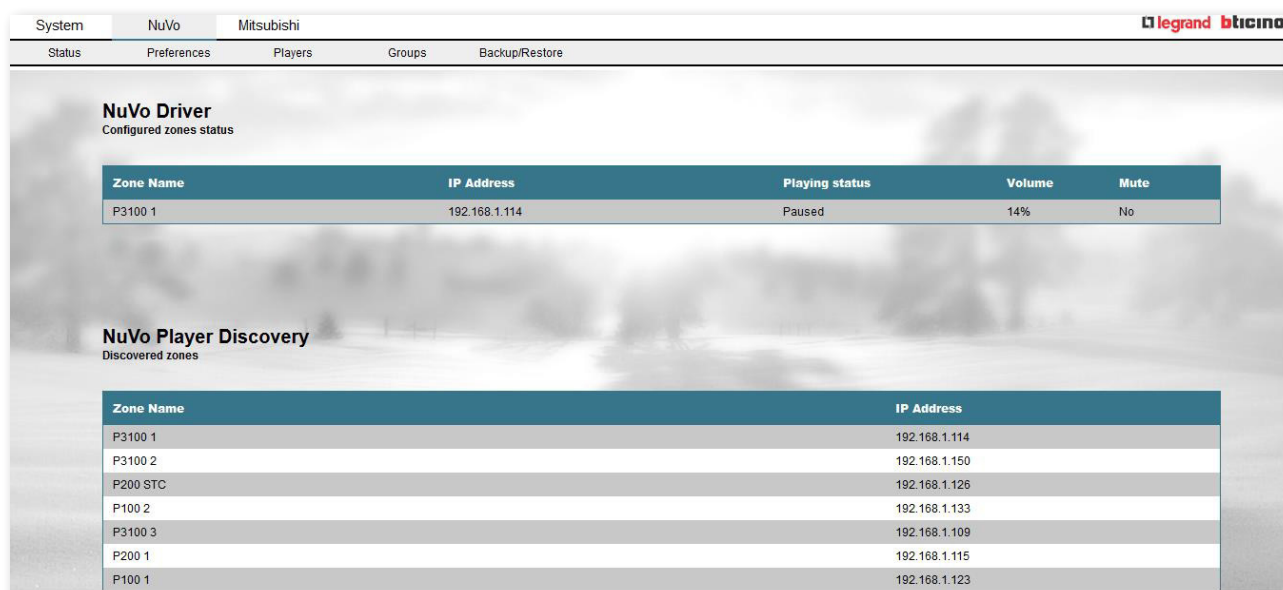
Once a scenario is configured save it with the “Save” key and confirm with “Apply”.



Status

Two types of information can be monitored from this page:

- **Status of the configured zones:** shows the list of configured zones in the MyHOME system and the "Playing Status", "Volume" and "Mute" information.
- **Discovered zones:** shows a list of discovered zones for the whole NUVO system. Certain information will be displayed for each discovered zone, such as: "Zone Name" and "IP Address".



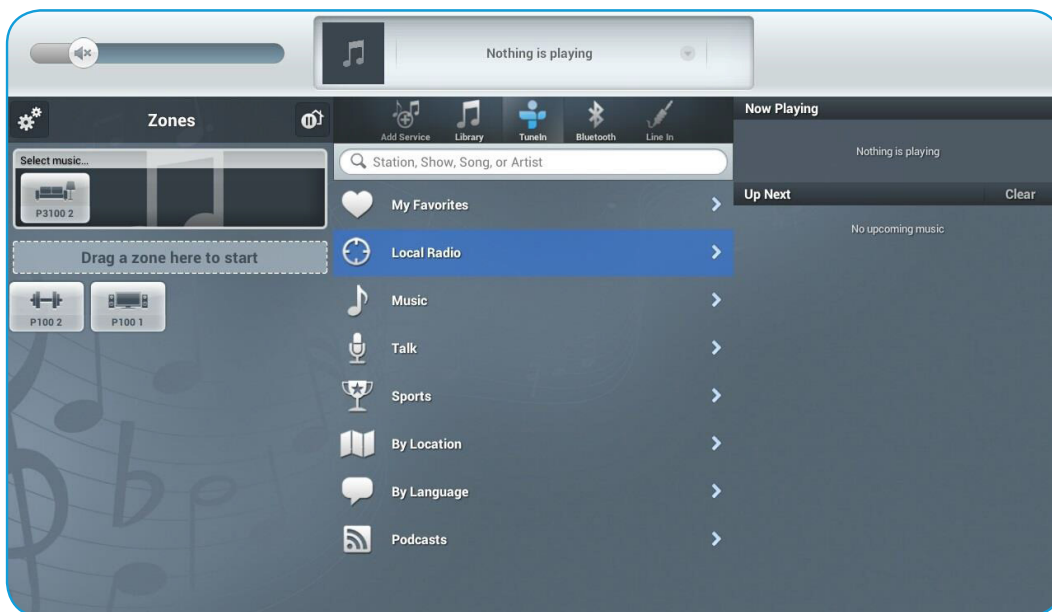
In the image above only one NUVO zone has been configured, with NV-P3100-EU player, but the entire NUVO system is designed to configure up to 16 zones, displayed in the “NUVO Player Discovery” table.

Additional information

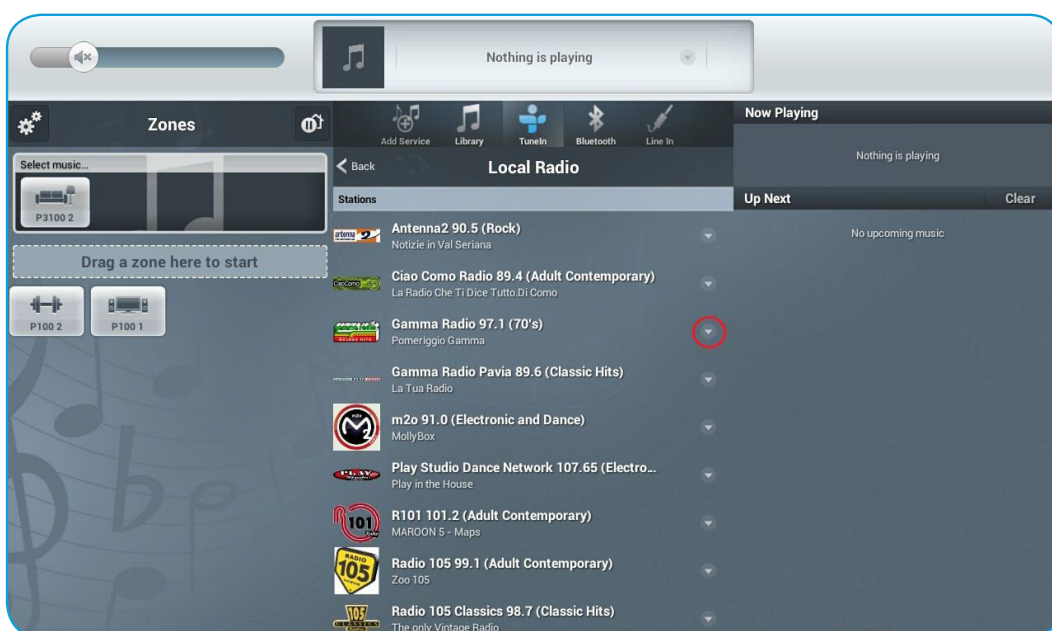
NUVO APP – Add the radios in streaming to the “Favorites” list

The NUVO App can perform this operation performing the following passages:

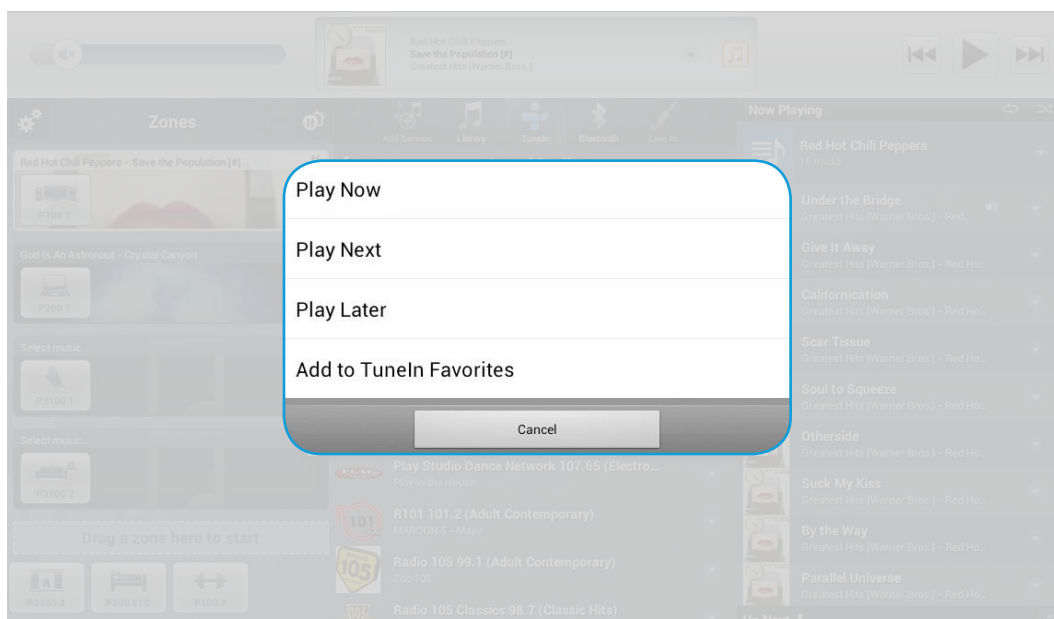
- . Select a zone on the left side and access “TuneIn”, then select “Local Radio”.



- . When the list of local radios is displayed, select the “drop-down menu” icon on the right of the “Stations” to be added.



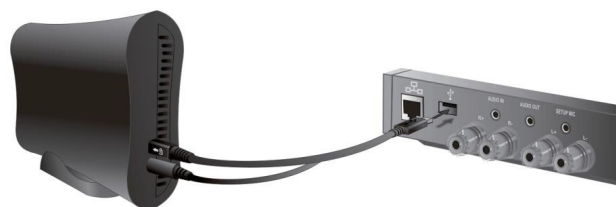
- . Select **"Add to Tuneln Favorites"** to add a radio.
- The radio will thus be added to Tuneln -> **"My Favorites"**.



Sharing the audio contents in network

You can easily share your tunes with the whole system by simply connecting a storage device to the USB input in the rear panel of any zone player.

The player will automatically analyse the device content and add it with the albums to the system music playlist.



Creation of a Playlist on USB pendrive.

A playlist can be created with **"Windows Media Player"** (default) or **VLC** (free multimedia player available for all Windows, Linux and Mac platforms).

The extensions supported for the playlist are **".wpl"** **"wpl"** and **".m3u"**.



A Group brand |  legrand

BTicino SpA
Viale Borri, 231
21100 Varese - Italy
www.bticino.com