

Integration between MyHOME and systems of other manufacturers

My Home is an open system that easily integrates, without modification, with the best technologies and with systems and devices from other manufacturers. The integration is carried out with the following modalities:

A. by means of the MyHOME_Link integration platform which involves the use of the Driver Manager F459 device and the TCP / IP communication protocol;

B. by devices for integration with different communication protocols such as EIB, DALI, etc.;

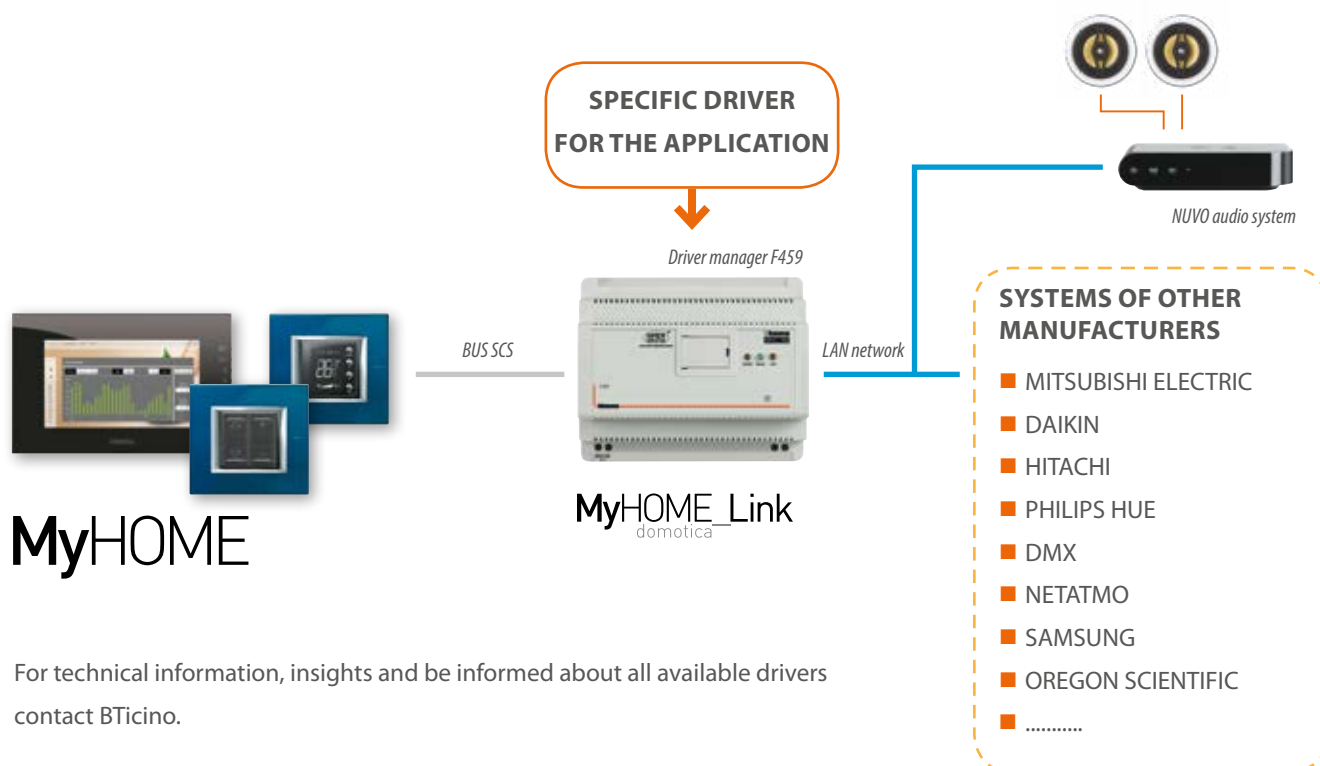
C. using the OpenWebNet communication protocol made available by BTicino.

A. INTEGRATION BY MYHOME_LINK PLATFORM

MyHOME_Link is the new integration platform that uses the driver manager device item F459 properly configured with the specific driver to manage the functions/ systems of other manufacturers. This solution allows, for example, to manage through the MyHome zone

temperature control system, VRV, VRF systems and air conditioning systems of the main manufacturers on the market or to use the light automation devices to control the LED lamps (type HUE and similar) or to control the BTicino NUVO digital audio system. The device item F459 can be

programmed with multiple drivers to manage multiple different systems integrated with MyHOME. To know about the different integration solutions visit www.professionisti.bticino.it/integrazione_myhome/.

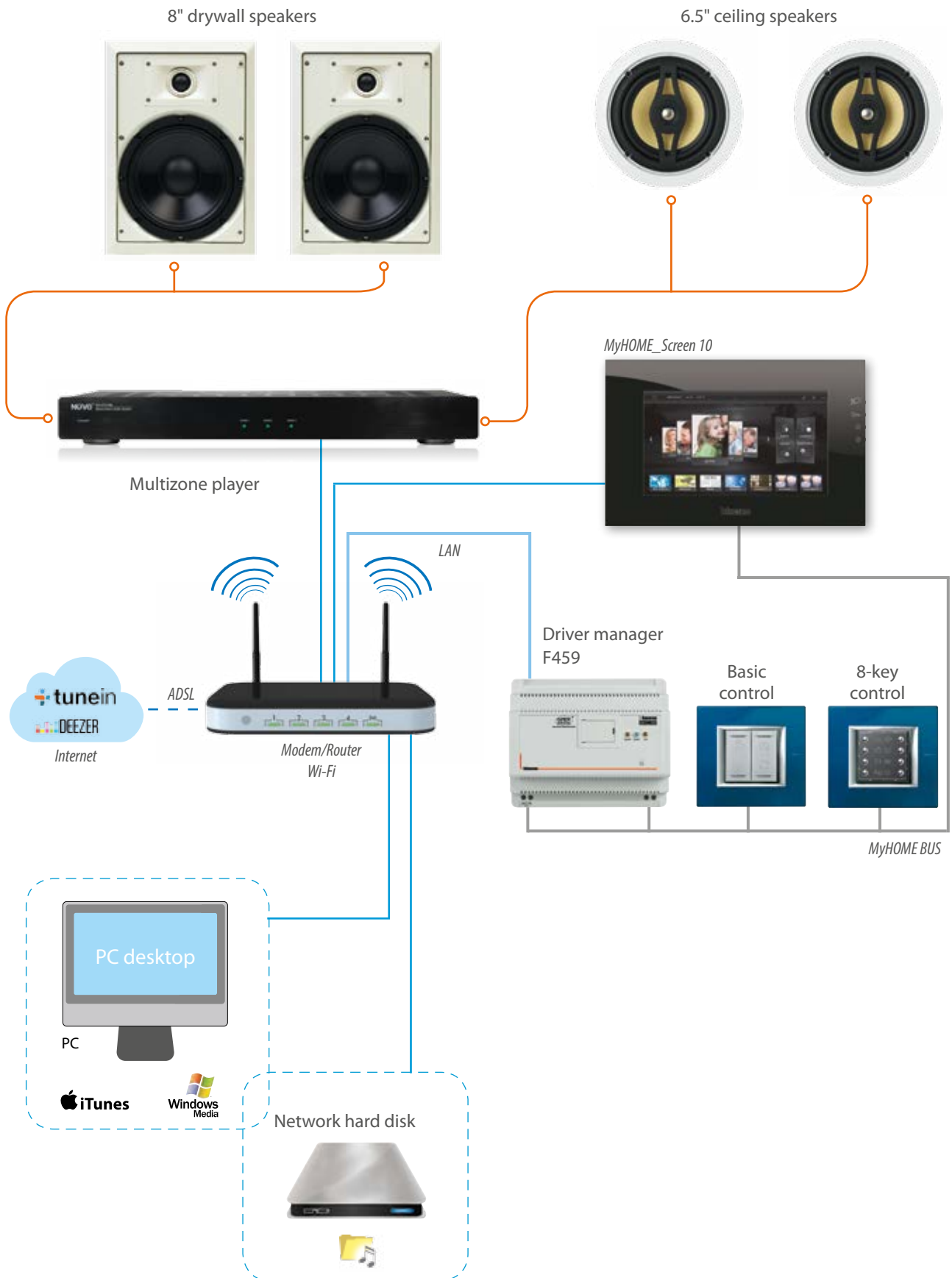


For technical information, insights and be informed about all available drivers contact BTicino.

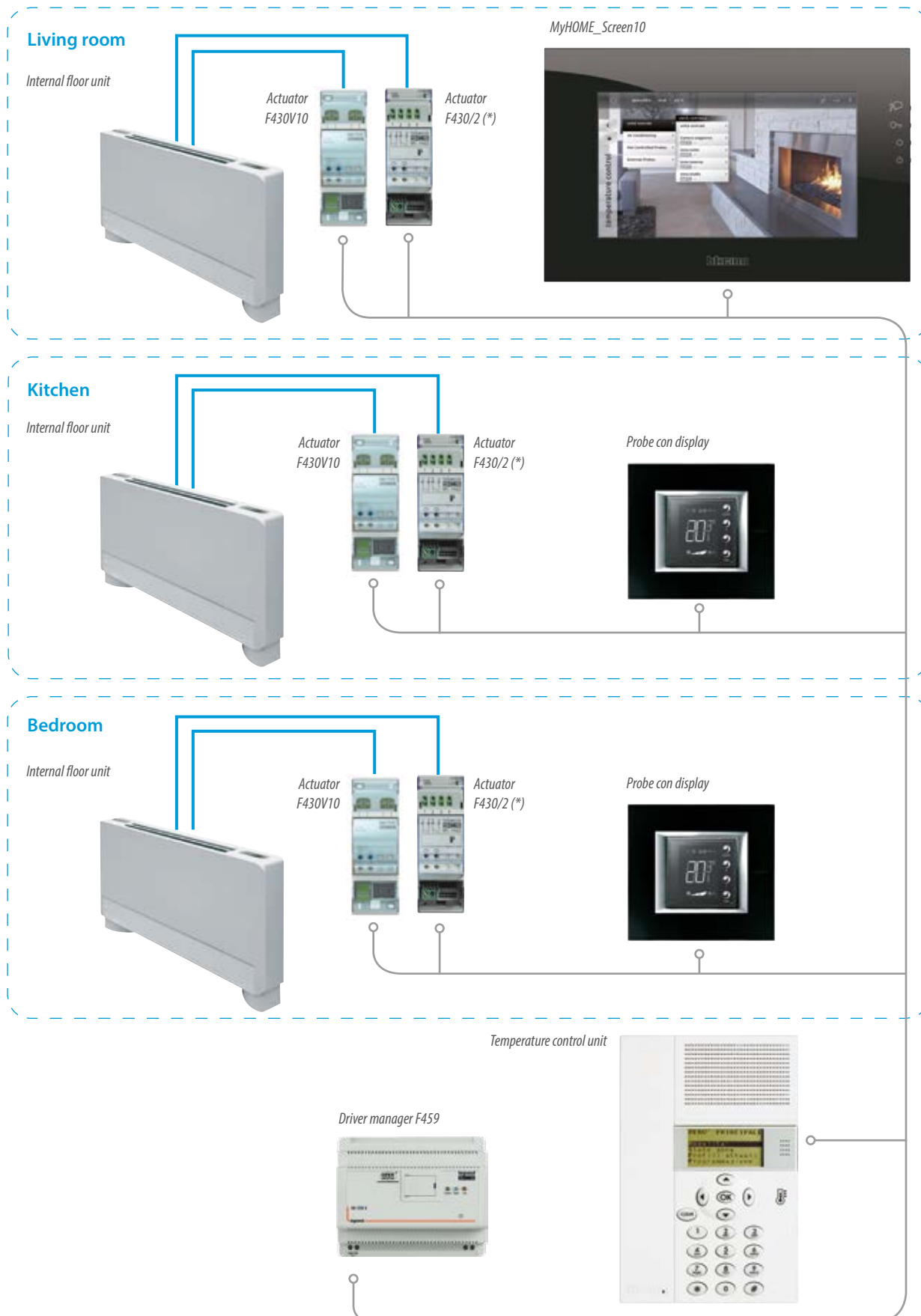
GENERAL FEATURES

Integration between MyHOME and systems of other manufacturers

EXAMPLE OF MYHOME INTEGRATION WITH THE NUVO DIGITAL AUDIO SYSTEM

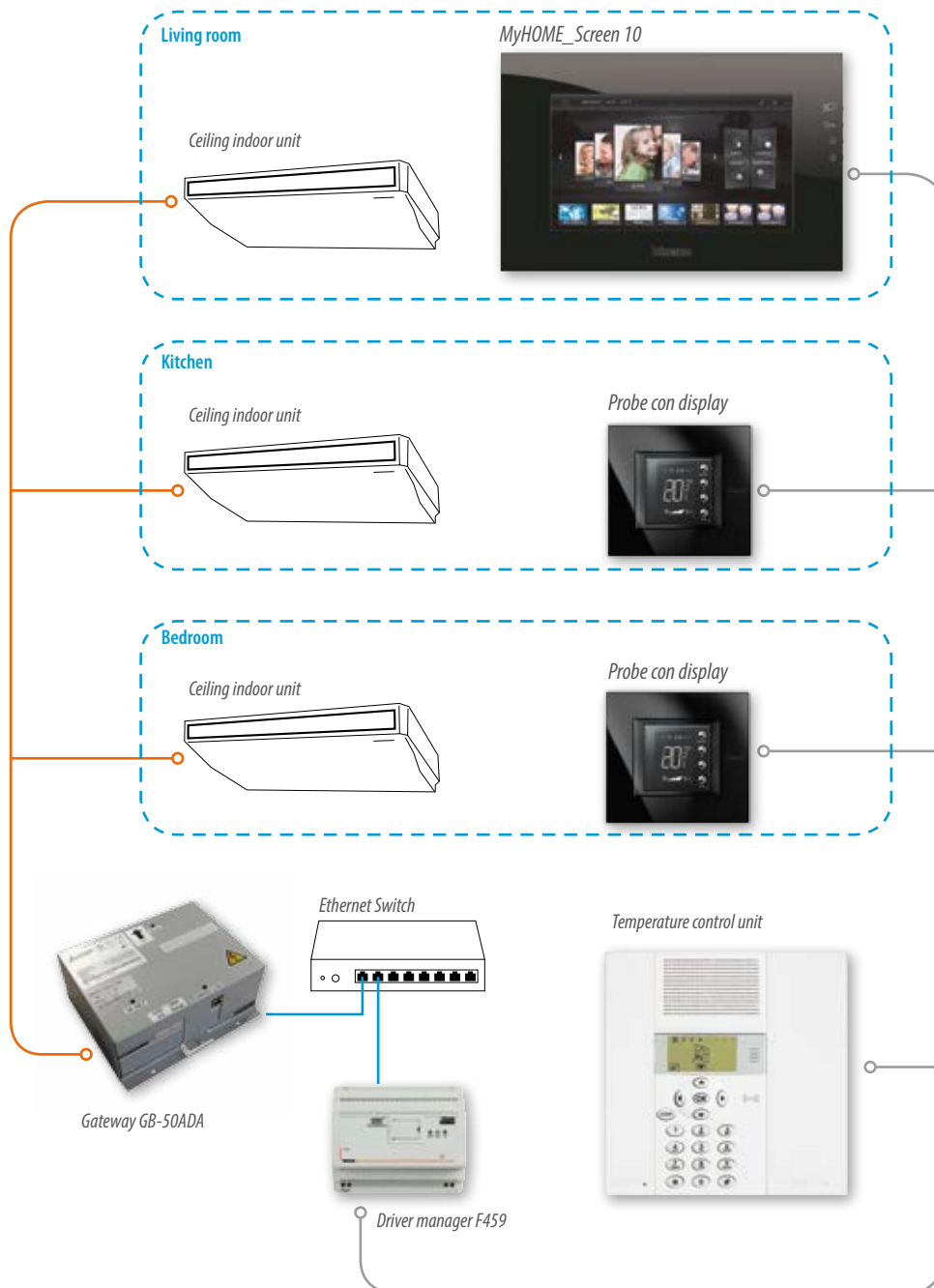


EXAMPLE OF MYHOME INTEGRATION WITH 0-10V FAN-COIL SYSTEMS

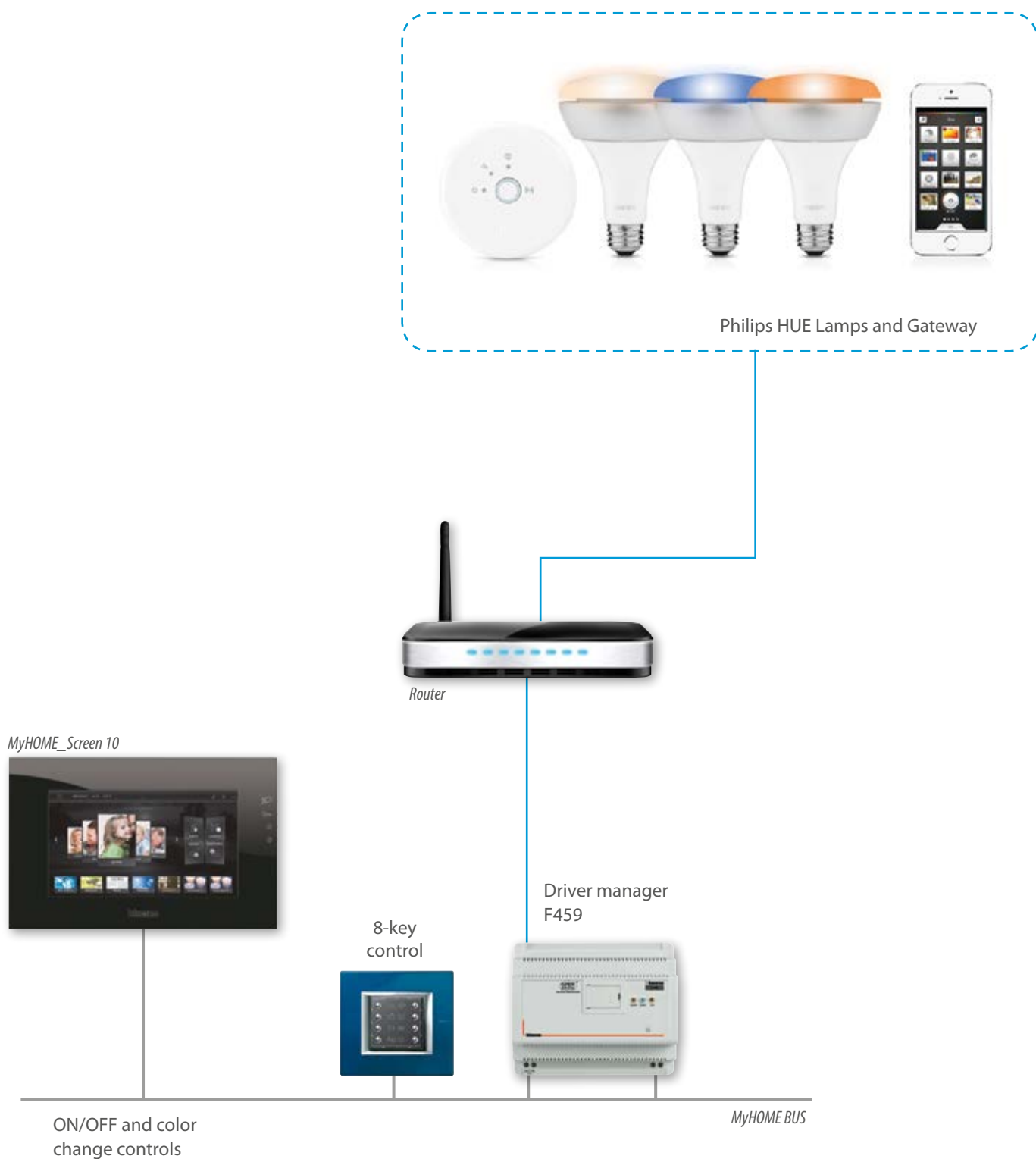


Integration between MyHOME and systems of other manufacturers

EXAMPLE OF MYHOME INTEGRATION WITH MITSUBISHI AIR CONDITIONING SYSTEM



EXAMPLE OF MYHOME INTEGRATION WITH PHILIPS HUE LIGHTING SYSTEM



Integration between MyHOME and systems of other manufacturers

EXAMPLE OF MYHOME INTEGRATION WITH WEATHER SENSOR, LIGHT SENSOR, ETC.

